

# MONTHLY MEMBERSHIP PROGRESS REPORT

District 202 L

Results as of: 5/31/2020

GMT:

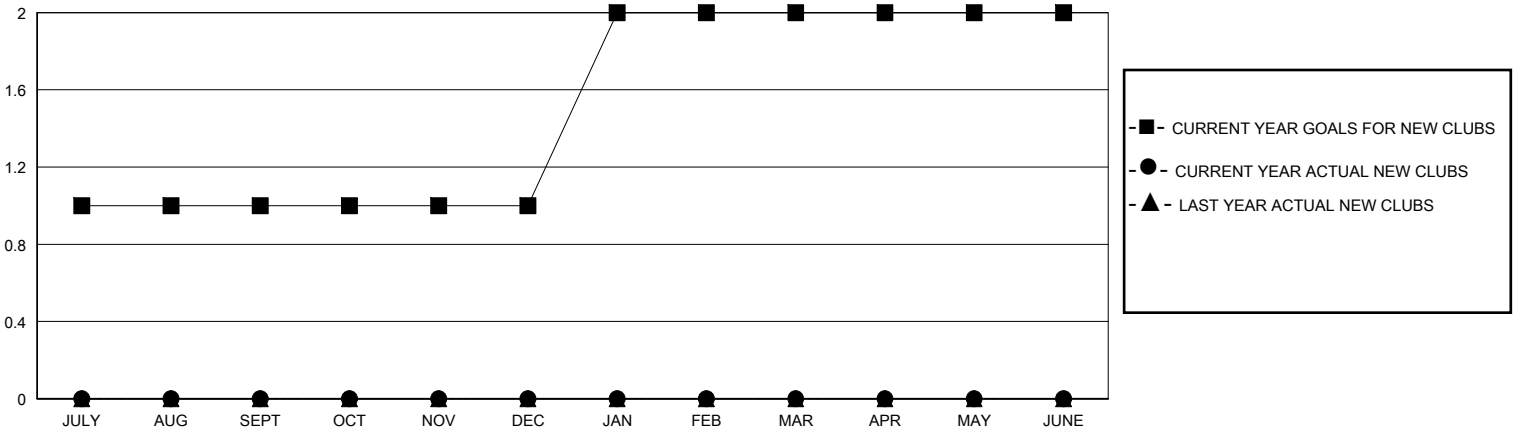
LOCATION NEW ZEALAND

GMT CA

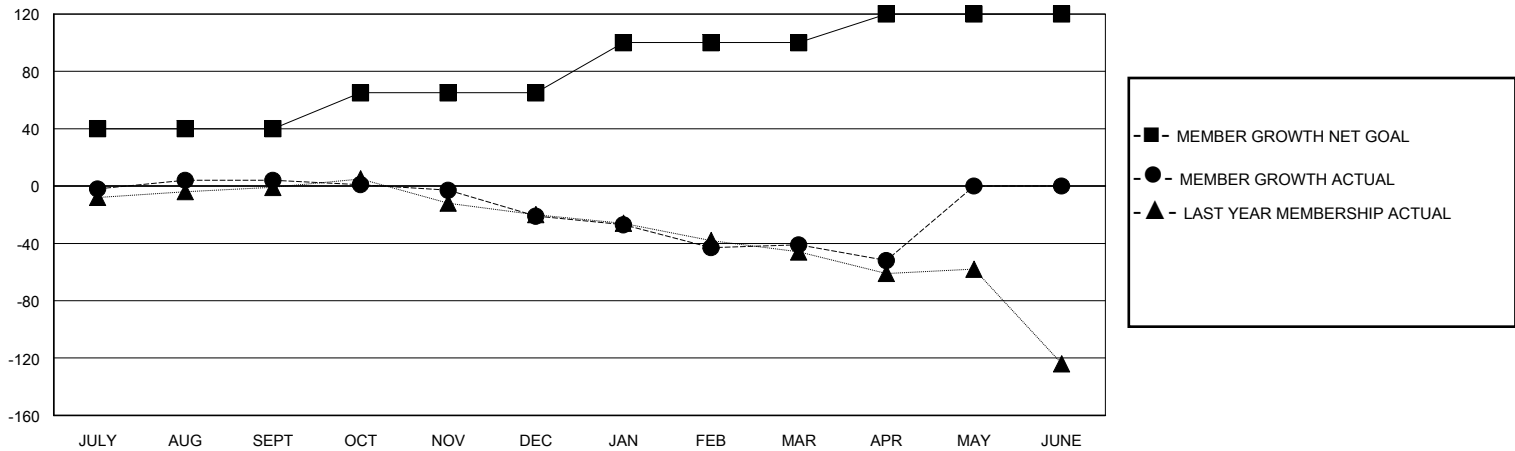
Clubs			
RESULTS FOR 2019-2020			
QUARTER	NEW CLUB GOAL	NEW CLUBS	DROPPED CLUBS
JULY/AUG/SEPT	1	0	1
OCT/NOV/DEC	0	0	0
JAN/FEB/MAR	1	0	1
APR/MAY/JUNE	0	0	0

Members			
RESULTS FOR 2019-2020			
QUARTER	MEMBER GROWTH NET GOAL	MEMBER GROWTH ACTUAL	DROPPED MEMBERS ACTUAL (including transfers)
JULY/AUG/SEPT	40	57	43
OCT/NOV/DEC	25	23	43
JAN/FEB/MAR	35	24	40
APR/MAY/JUNE	20	7	17

GOALS AND ACTUAL NEW CLUBS CUMULATIVE



GOALS AND ACTUAL MEMBERS CUMULATIVE



DROPPED CLUBS: 2	37 CLUBS OF 58 ADDED 1 OR MORE NEW MEMBERS	<b>GENDER DISTRIBUTION</b> MALE 1,081 (68.90%) FEMALE 488 (31.10%)
<b>DROPPED MEMBERS</b> DECEASED 23 CLUB CANCELLED 0 OTHER 120 TOTAL 143	<a href="#">CLICK HERE FOR CUMULATIVE MEMBERSHIP DATA</a>	TOTAL FAMILY UNIT MEMBERS 148 FAMILY MEMBERS PAYING HALF DUES 74